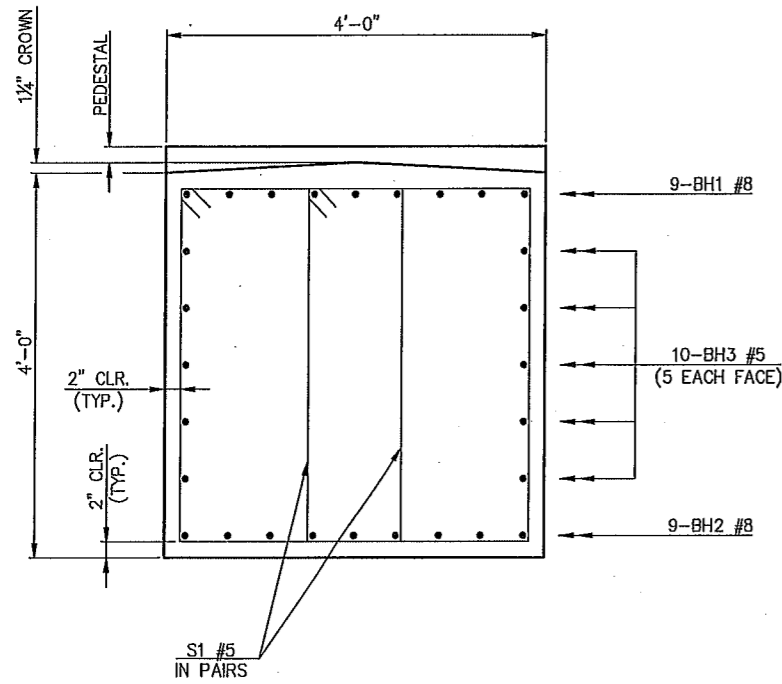
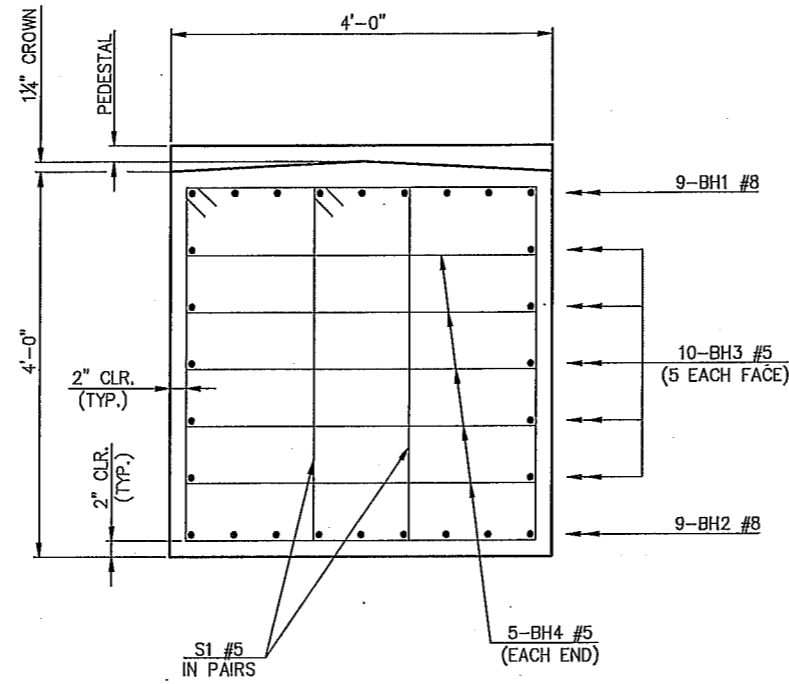


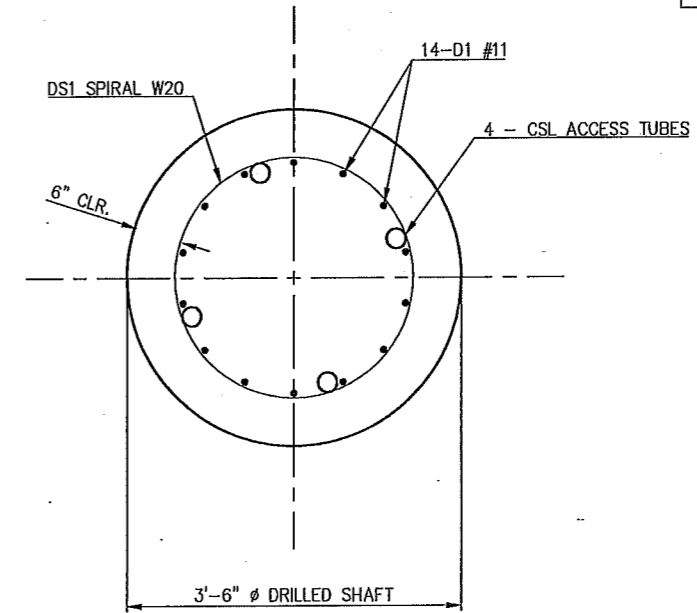
DESCRIPTION	REVISIONS	DATE



SECTION A-A



END SECTION

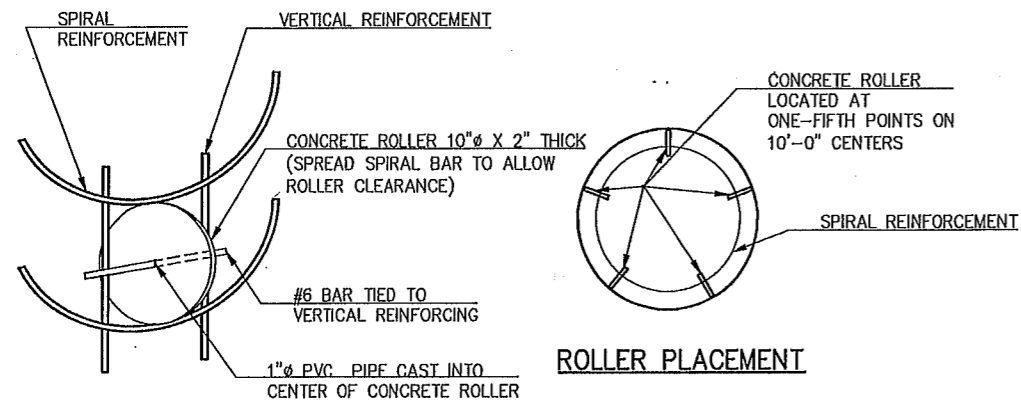
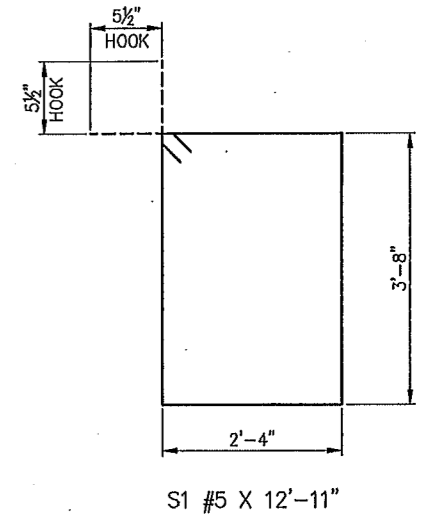
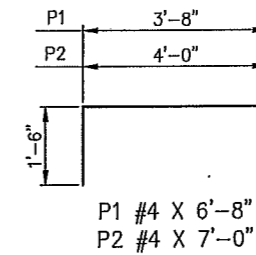
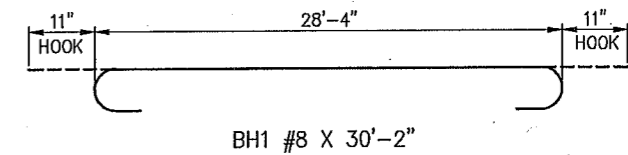


SECTION B-B

BAR LIST - PIER NO. 1				
MARK	SIZE	NO.	FORM	LENGTH
BH1	#8	9	BNT.	30'-2"
BH2	#8	9	STR.	28'-4"
BH3	#5	10	STR.	28'-4"
BH4	#5	10	BNT.	5'-8"
P1	#4	15	BNT.	6'-8"
P2	#4	15	BNT.	7'-0"
S1	#5	52	BNT.	12'-11"
TWO DRILLED SHAFTS ①				
D1	#11	28	STR.	35'-5"
DS1	W20	2	SPIRAL	520'-9"

BAR LIST - PIER NO. 2				
MARK	SIZE	NO.	FORM	LENGTH
BH1	#8	9	BNT.	30'-2"
BH2	#8	9	STR.	28'-4"
BH3	#5	10	STR.	28'-4"
BH4	#5	10	BNT.	5'-8"
P1	#4	15	BNT.	6'-8"
P2	#4	15	BNT.	7'-0"
S1	#5	52	BNT.	12'-11"
TWO DRILLED SHAFTS ①				
D1	#11	28	STR.	39'-5"
DS1	W20	2	SPIRAL	583'-8"

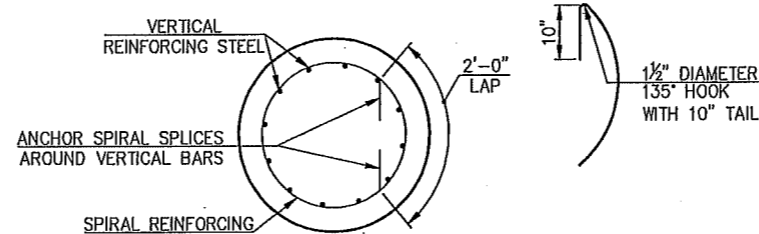
① INCLUDED IN PRICE BID PER LINEAR FOOT OF DRILLED SHAFT.



ROLLER INSTALLATION

DETAIL OF CONCRETE ROLLER

NOTE: CONCRETE USED IN THE CONCRETE ROLLERS SHALL HAVE A MINIMUM 28 DAY COMPRESSIVE STRENGTH OF 4,000 P.S.I. SLAB BOLSTERS, HIGH CHAIRS AND PLASTIC ROLLERS SHALL NOT BE SUBSTITUTED FOR THE CONCRETE ROLLERS.



DETAIL OF SPIRAL REINFORCING SPLICE

NOTE: SPIRAL BARS SHALL CONFORM TO AASHTO M-32. SPIRAL BAR LENGTH DOES NOT INCLUDE LAP. IF LAP IS REQUIRED, THE LENGTH OF THE LAP SHALL BE AS SHOWN.

PROFESSIONAL ENGINEER
MICHAEL B. SIMMONS
24576
STATE OF OKLAHOMA
2/26/2016

NS-255 OVER SAND CREEK BRIDGE "A"	MAJOR COUNTY	Design	MZV	2/16
		Detail	MZY	2/16
		Check	MBS	2/16
		Special Engr.		
STATE OF OKLAHOMA		GUY ENGINEERING SERVICES, INC.		SHEET NO. BO03
JOB PRICE NO. 28348(04)				

Friday, February 26, 2016 2:58:44 PM V:\16-991E NS255 Sand Ck. 28348 CED8 Major County\STRUCTURAL\DWG\Sand Creek CREEK - PIERS.dwg